



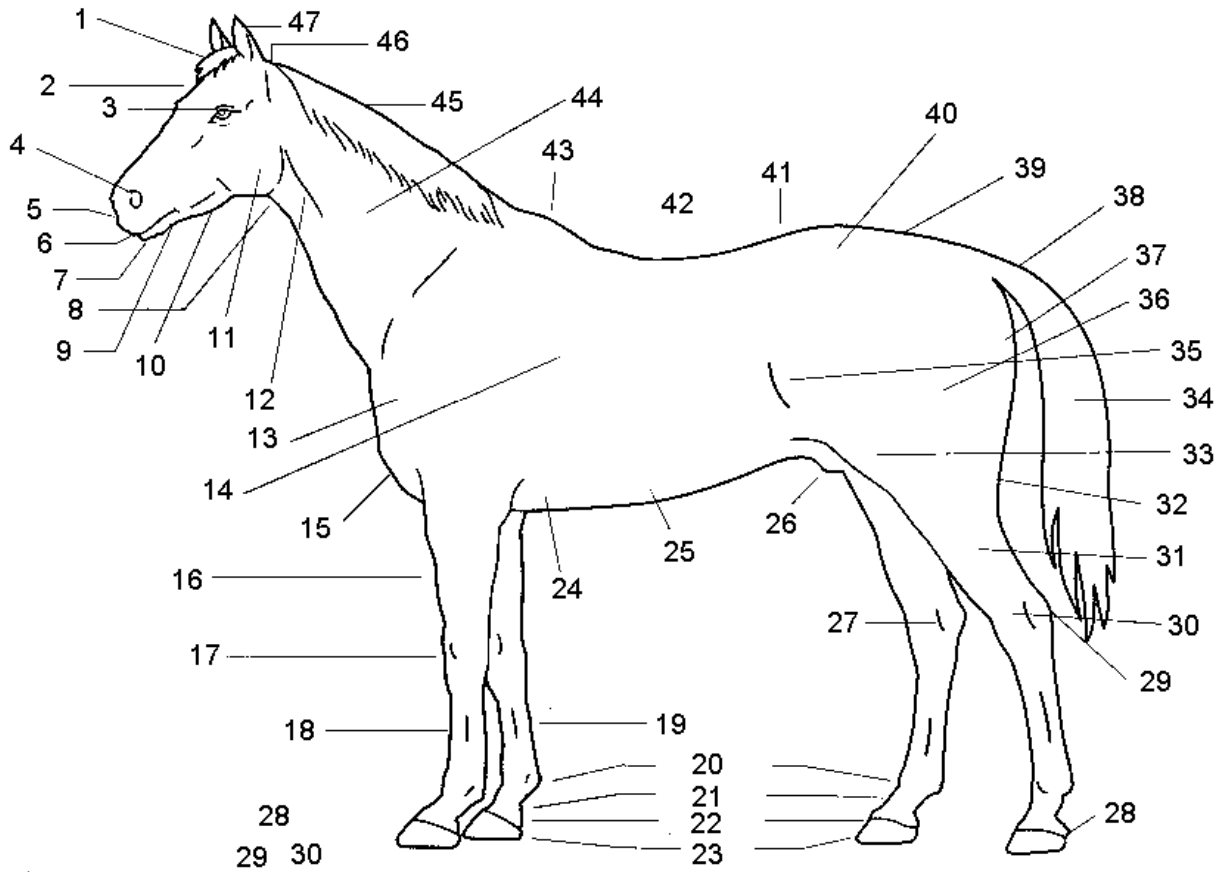
# HORSEMANSHIP

## Merit Badge Requirements

- 1) Do the following:
  - A) Describe the safety precautions you should take when handling and caring for a horse.
  - B) Explain and demonstrate how to approach and lead a horse safely from a stall, corral, or field and how to tie the horse securely.
  - C) Demonstrate how to safely mount and ride a horse and how to safely dismount the horse after your ride.
- 2) Name 15 main parts of a horse.
- 3) Name four leading breeds of horses. Explain the special features for which each breed is known.
- 4) Show how to care for a Western and English saddle and bridle. Name 10 parts of the saddle and bridle that you will use.
- 5) Show how to groom, pick out hooves, prepare a horse for a ride, and care for a horse after a ride.
- 6) Describe the symptoms of colic. Describe four other horse health problems.
- 7) Name three main conformation faults of the feet and legs, and explain how to detect them. Explain the difference between lameness and unsoundness.
- 8) Explain how to trim and shoe a horse's foot and how to make adjustments according to its conformation, the season of the year, and the riding conditions.
- 9) Demonstrate the correct way to feed a horse. Explain how you determined what and how much to feed the horse and why the amount and kind of feed will be changed according to activity level and the kind of horse it is.
- 10) Show how to saddle and bridle a horse.
- 11) On level ground, continuously do the following movements. Do them correctly, at ease, and in harmony with the horse:
  - A) Mount
  - B) Walk horse in a straight line for 60 feet
  - C) Make a half circle of not more than 16 feet in radius
  - D) Trot or jog in a straight line for at least 60 feet
  - E) Make a half circle of not more than 30 feet in radius at a jog or trot
  - F) Halt straight
  - G) Back up straight four paces
  - H) Halt and dismount



Using the picture below, point out and name at least 15 parts of a horse:



Parts of a horse

### Requirement 3

What are 4 of the leading breeds of horses? And what special feature is each breed known for?

Breed: \_\_\_\_\_

Known For: \_\_\_\_\_

Breed: \_\_\_\_\_

Known For: \_\_\_\_\_

Breed: \_\_\_\_\_

Known For: \_\_\_\_\_

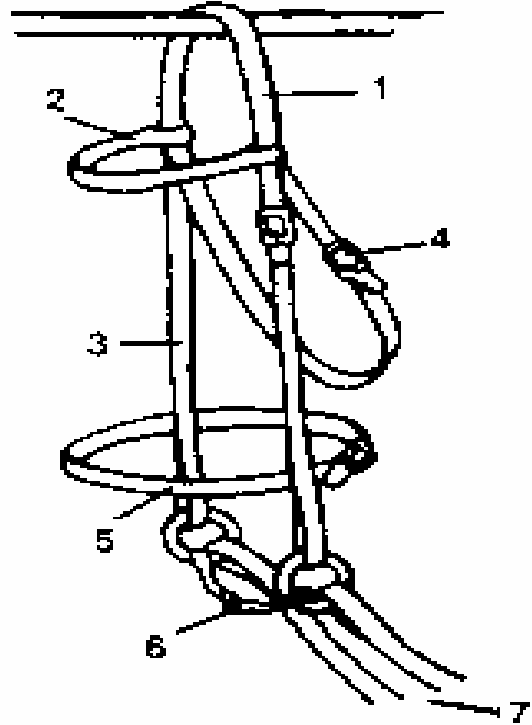
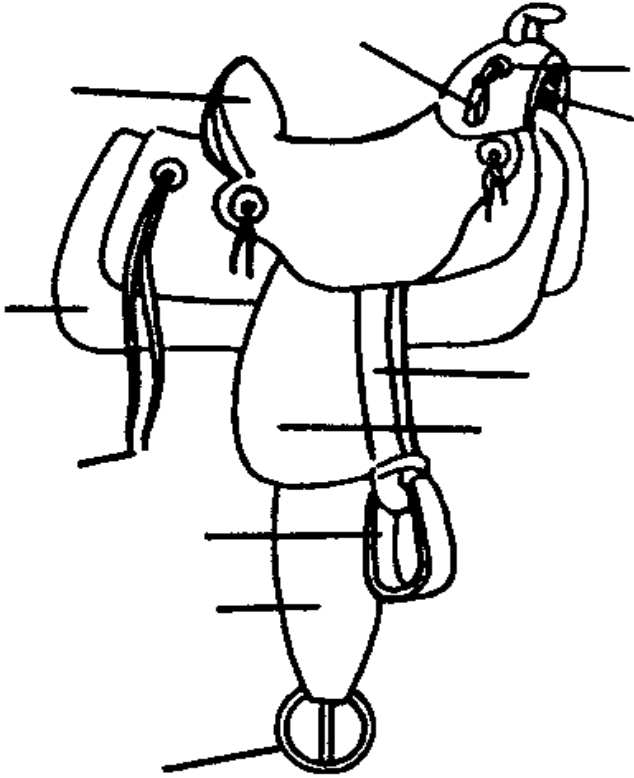
Breed: \_\_\_\_\_

Known For: \_\_\_\_\_

### Requirement 4

\_\_\_ Show how to care for a Western and English saddle and bridle. Have your merit badge counselor initial here after you have completed this requirement.

Name 10 parts of the saddle and bridle that you will use:



### Requirement 5

\_\_\_ Show your merit badge counselor how to groom, pick out hooves, prepare a horse for a ride, and care for a horse after a ride. have your merit badge counselor initial here after you have shown them the process.

### Requirement 6

Describe the symptoms of colic: \_\_\_\_\_  
\_\_\_\_\_  
\_\_\_\_\_  
\_\_\_\_\_

Name and describe four other horse health problems:

Name of Health Problem: \_\_\_\_\_

Description of Health Problem: \_\_\_\_\_  
\_\_\_\_\_  
\_\_\_\_\_

Scout Name: \_\_\_\_\_ Unit #: \_\_\_\_\_ Date: \_\_\_\_\_

Name of Health Problem: \_\_\_\_\_

Description of Health Problem: \_\_\_\_\_

Name of Health Problem: \_\_\_\_\_

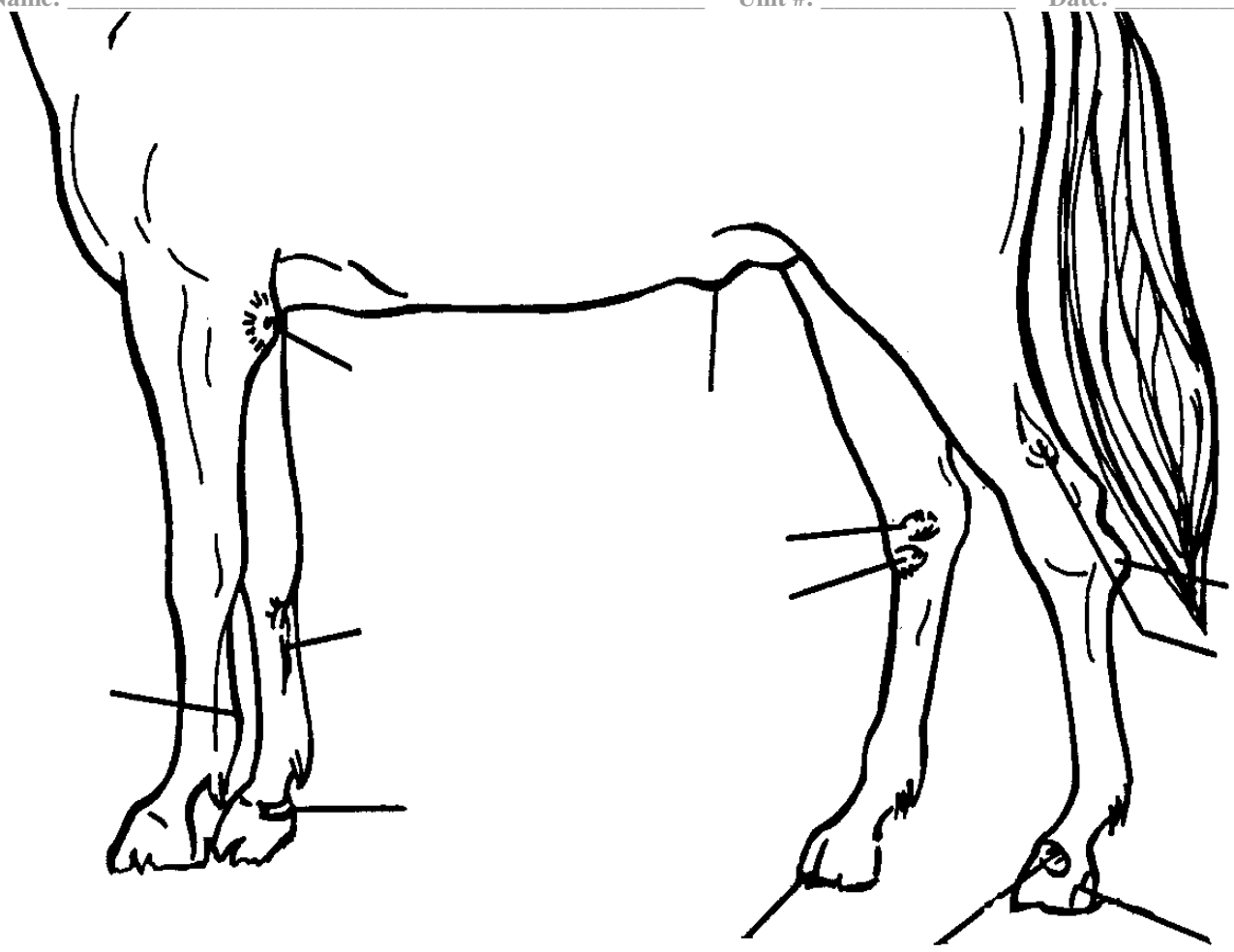
Description of Health Problem: \_\_\_\_\_

Name of Health Problem: \_\_\_\_\_

Description of Health Problem: \_\_\_\_\_

### **Requirement 7**

Name three main conformation faults of the feet and the legs of a horse. The picture below points to some of the main ones, can you name them all?



Using the three main conformation faults you identified, explain below how to detect them.

Conformation Fault: \_\_\_\_\_  
\_\_\_\_\_  
\_\_\_\_\_

Conformation Fault: \_\_\_\_\_  
\_\_\_\_\_  
\_\_\_\_\_

Conformation Fault: \_\_\_\_\_  
\_\_\_\_\_  
\_\_\_\_\_

Explain the difference between lameness and unsoundness: \_\_\_\_\_  
\_\_\_\_\_  
\_\_\_\_\_

Scout Name: \_\_\_\_\_ Unit #: \_\_\_\_\_ Date: \_\_\_\_\_

### Requirement 8

Explain how to trim and shoe a horse's foot and how to make adjustments according to its conformation, the season of the year, and the riding conditions: \_\_\_\_\_

---

---

---

---

---

---

---

---

---

---

### Requirement 9

Describe the correct way to feed the horse you are using for this badge:

---

---

---

---

---

---

---

---

---

---

Explain how you determined what and how much to feed the horse and why the amount and kind of feed will be changed according to activity level and the kind of horse it is: \_\_\_\_\_

---

---

---

---

---

---

---

---

---

---

### Requirement 10

\_\_\_\_ Show how to saddle and bridle a horse. Have your merit badge counselor initial here after you have completed this requirement.

### Requirement 11

On level ground, continuously do the following movements. Do them correctly, at ease, and in harmony with the horse. Have your counselor or adult supervisor check off each one as they watch you do them.

Scout Name: \_\_\_\_\_

Unit #: \_\_\_\_\_

Date: \_\_\_\_\_

- Mount the horse.
- Walk the horse in a straight line for 60 feet.
- Make a half circle of not more than 16 feet in radius.
- Trot or jog in a straight line for at least 60 feet.
- Make a half circle of not more than 30 feet in radius at a jog or trot.
- Halt straight.
- Back up straight four paces.
- Halt and dismount.