



Canoeing

Merit Badge Workbook

This workbook is not required but is designed to help you with this merit badge. No one can add or subtract from the Boy Scout Requirements #33215. Use page backs & add pages as needed. Please send comments to: craig@craiglincoln.com. Requirements revised: 2005, Workbook updated: January 2005.

Scout's Name: _____ Unit: _____

Counselor's Name: _____ Counselor's Ph #: _____

1. Show that you know first aid for injuries or illnesses that could occur while canoeing, including

hypothermia, _____

heat reactions, _____

dehydration, _____

insect stings, _____

tick bites, _____

and blisters _____

2. Do the following:

(a) Identify the conditions that must exist before performing CPR on a person. _____

Explain how such conditions are recognized. _____

(b) Demonstrate the proper technique for performing CPR using a training device approved by your counselor.

3. Before doing the following requirements, successfully complete the BSA swimmer test: Jump feetfirst into water over the head in depth. Level off and swim 75 yards in a strong manner using one or more of the following strokes: sidestroke, breaststroke, trudgen, or crawl; then swim 25 yards using an easy, resting backstroke. The 100 yards must be completed in one swim without stops and must include at least one sharp turn. After completing the swim, rest by floating.

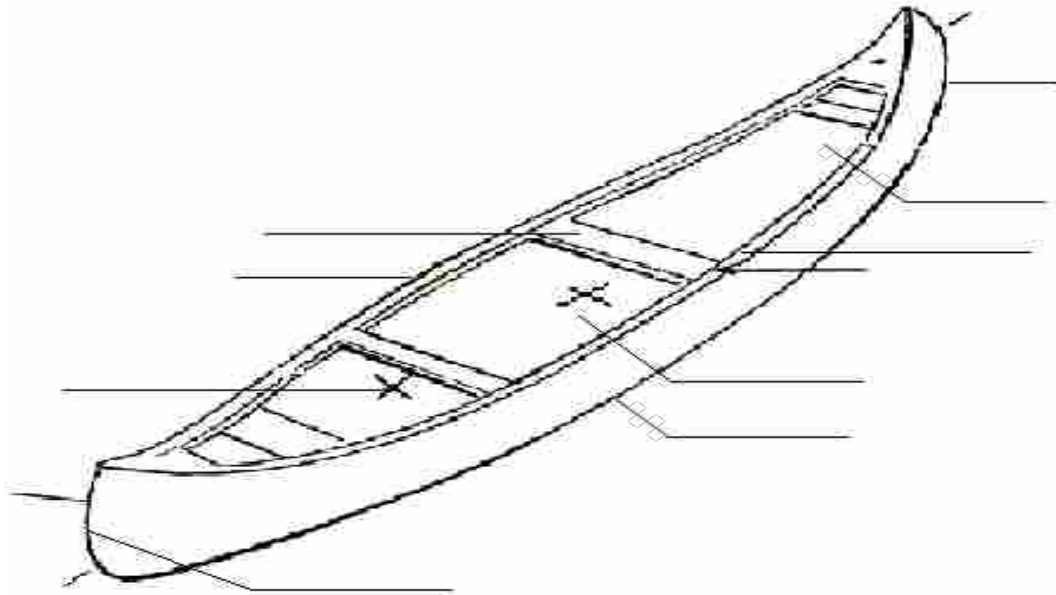
4. Discuss the following

(a) The BSA Safety Afloat policy Tell how it applies to canoeing activities. _____

(b) The most common weather and water-related hazards encountered while canoeing and how to deal safely with each one. _____

5. Do the following:

(a) Name and point out the major parts of a canoe.



(b) Describe how the length and shape of a canoe affect its performance. _____

(c) Discuss the advantages and disadvantages of the different materials used to make canoes.

Material	Advantages	Disadvantages
_____	_____	_____
_____	_____	_____
_____	_____	_____
_____	_____	_____

(d) Name and point out the parts of a paddle.



Explain the difference between a straight and bent-shaft paddle and when each is best used. _____

(e) Demonstrate how to correctly size a paddle for a paddler in a sitting position and a kneeling position. _____

(f) Name the different types of personal flotation devices (PFDs), and explain when each type should be used. _____

(g) Show how to properly fit and test a PFD of correct size. _____

(h) Discuss the general care and maintenance of canoeing equipment. _____

(i) Discuss what personal and _____

group equipment would be appropriate for a canoe camping trip. _____

Describe how personal and group equipment can be packed and protected from water. _____

(j) Demonstrate how to load and secure equipment in a canoe. _____

(k) Using appropriate knots, demonstrate how to secure a canoe to a rack on land, a vehicle, or a canoe trailer. _____

6. With a companion, wearing the proper PFD and appropriately dressed for the weather and water conditions, use a properly equipped canoe to demonstrate the following:

(a) Safely carry and launch the canoe from a dock or shore (both, if possible). _____

(b) Safely land the canoe on a dock or shore (both, if possible) and return it to its proper storage location. _____

(c) Demonstrate kneeling and sitting positions in a canoe and explain the proper use for each position. _____

(d) Change places while afloat in the canoe. _____

(e) In deep water, exit the canoe and get back in without capsizing. _____

(f) Capsize the canoe and demonstrate how staying with a capsized canoe will support both paddlers. _____

(g) Swim, tow, or push a swamped canoe 50 feet to shallow water. In the shallow water, empty the swamped canoe and reenter it.

(h) In deep water, rescue a swamped canoe and its paddlers by emptying the swamped canoe and helping the paddlers safely reenter their boat without capsizing.

7. With a companion, wearing the proper PFD and appropriately dressed for the weather and water conditions, demonstrate the following paddling strokes as both a bow and stern paddler:

- (a) Forward stroke _____
- (b) Backstroke _____
- (c) Draw _____
- (d) Pushaway _____
- (e) Forward sweep _____
- (f) Reverse or back sweep _____

For stern paddling only:

- (g) J-stroke _____

8. Using the strokes in requirement 7, demonstrate the following tandem maneuvers while paddling on opposite sides and without changing sides. Repeat after switching positions and paddling sides:

- (a) Pivot or spin the canoe in either direction. _____
- (b) Move the canoe sideways or abeam in either direction. _____
- (c) Stop the canoe. _____
- (d) Move the canoe in a straight line for 50 yards. _____

9. Wearing the proper PFD and appropriately dressed for the weather and water conditions, demonstrate solo canoe handling:

- (a) Launch from shore or a pier (both, if possible). _____
- (b) Using a single-blade paddle and paddling only on one side, demonstrate proper form and use of the forward stroke, backstroke, draw stroke, pushaway stroke, forward sweep, reverse or back sweep, and J-stroke. Repeat while paddling on the other side. _____
- (c) While paddling on one side only, paddle a 50-yard course making at least one turn underway and one reverse of direction. Repeat while paddling on the other side. _____
- (d) Make a proper landing at a dock or shore (both, if possible). Store canoe properly (with assistance, if needed). _____
- (e) In deep water, exit the canoe and then get back in without capsizing. _____

10. Discuss the following types of canoeing:

- (a) Olympic flatwater _____
- (b) Outrigger _____
- (c) Marathon _____
- (d) Freestyle _____
- (e) Whitewater _____
- (f) Canoe poling _____